



## SPECIFICATIONS

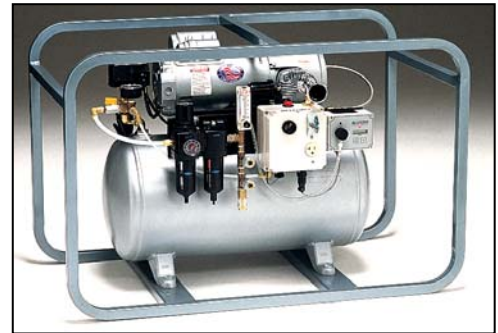
Product Description: **COMPRESSOR**  
 Part Number: **9865**  
 Model: **PORTABLE, WITH CO MONITOR**

### GENERAL DESCRIPTION:

Perfect for confined space applications, it is portable, oil-less and produces no Carbon Monoxide, oil vapors or mists. Integrated is a Carbon Monoxide monitor. It provides clean, breathable air for up to two pressure demand type respirators

### SPECIFICATIONS:

Motor: 1HP, 1725 RPM, 60Hz, 115V, Single Ø, 10.4 Amp (14.8 Amp Restart required),  
 Type: Reciprocating, straight piston, oil-less (6HCA-16-M616X), magnetic starter  
 Power Cable: 8' 14/3 AWG SJTW with integrated NEMA 5-15 plug.  
 Tank: 12 gal. ASME coded, powder coated steel with manual drain valve.  
 Comp. Restart: 65 psi (when press. falls below 65 psi)  
 Comp. Shutoff: 100 psi  
 Performance: 10-12 CFM  
 Switch: Toggle with guard  
 Frame: Powder coated square tube steel  
 Reinforced base.  
 Plumbing: Brass and stainless braided feed hose.  
 Quick-disconnect: Hansen couplers



### CO MONITOR:

Power source: 115V AC to 9V DC power adapter for continuous power supply.  
 9V DC Alkaline battery (primary or as back-up for AC adapter).  
 Alarm: 90 decibel Piezo audible alarm and an external power LED light signal.  
 Sensor: Electrochemical (Alarm Setting: 10ppm U.S./Canada: 5ppm)  
 Display: Liquid crystal (Modes: Normal Operation, Peak, Battery Charge and Calibration)  
 Calibration: Self adjusting calibration to 20ppm CO

### FILTRATION SYSTEM:

Regulator: High Pressure, Zinc body, Acetal Adjusting knob, ABS Cover, Brass/Nitrile valve, a 0-160 pressure gauge and an external relief valve. (Integrated with first stage)  
 First Stage: Zinc manifold, ABS Cover, Nylon guard, Polycarbonate bowl, with a 5 micron Sintered Polyethylene coalescing filter element and an automatic mechanical drain.  
 Second Stage: Zinc manifold, ABS Cover, Nylon guard, Polycarbonate bowl with a 0.010 micron Borosilicate Cloth coalescing filter element and manual drain. Pressure differential indicator.  
 Flow Meter: Clear acrylic, Teflon float, with adjustable metering valve.  
 Graduations from 0.0-1.0 LPM

\*\*\* If using a Generator, it must be 8,500 Watts or higher \*\*\*

### DIMENSIONS:

Length	Width	Height	Weight
39"	21"	25"	150 Lbs.



## SPECIFICATIONS

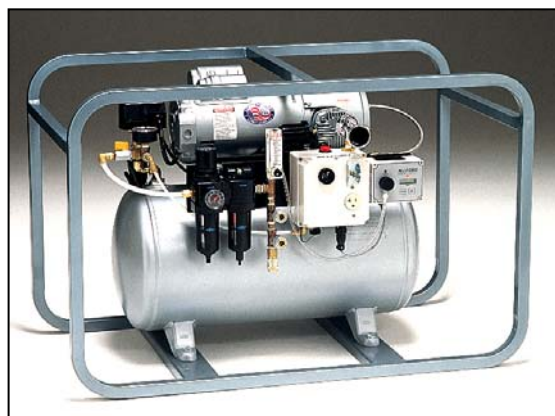
Product Description: **COMPRESSOR**  
Part Number: **9860**  
Model: **PORTABLE, W/O CO MONITOR**

### GENERAL DESCRIPTION:

Perfect for confined space applications, it is portable, oil-less and produces no Carbon Monoxide, oil vapors or mists. It provides clean, breathable air for up to two pressure demand type respirators.

### SPECIFICATIONS

Motor: 1HP 1725RPM, 60Hz 115V, 10.4Amp, Single Ø (14.8 Amp restart required)  
Type: Reciprocating, straight piston, oil-less (6HCA-16T-M616X).  
Tank: 12 gal. ASME coded, powder coated steel with manual drain valve.  
Comp. Restart: 65 psi (Low press. alarm when press falls below 65 psi)  
Power Cable: 8' 14/3 AWG SJTW  
Plug: Integrated NEMA 5-15.  
Switch: Toggle with guard  
Starter: Magnetic  
Comp. Shutoff: 100 PSI  
Performance: 10-12 CFM  
Frame: Powder coated square tube steel  
Reinforced base.  
Plumbing: Brass  
Stainless braided feed hose.  
Poly tubing  
Couplers: 2 Hansen Brass *Quick-Connect*.  
Relief Valve: Spring-loaded set at 125 psi



\*compressor shown with CO monitor PN: 9865

### FILTRATION SYSTEM:

Regulator: High pressure, zinc body, acetal adjusting knob, ABS cover, brass/nitrile valve, a 0-160 pressure gauge and an. (Integrated with first stage)  
First Stage: Zinc manifold, ABS cover, nylon guard, polycarbonate bowl, with a 5 micron sintered polyethylene coalescing filter element and an automatic mechanical drain mechanism.  
Second Stage: Zinc manifold, ABS cover, nylon guard, polycarbonate bowl with a 0.010 micron borosilicate cloth coalescing filter element and manual drain. Pressure differential indicator.

**\*\*\* If using a Generator, it must be 8,500 Watts or higher \*\*\***

### DIMENSIONS:

Length	Width	Height	Weight
39"	21"	25"	150 Lbs.