

SPECIFICATIONS

Product Description: **AMBIENT AIR PUMP A-1500 EX**
Part Number: **9833**
Style: **ROTARY VANE, EXPLOSION PROOF**

GENERAL DESCRIPTION:

Portable explosion proof air source for up to three full or half face respirator users, or two hood users.
Solid performance in multi-worker applications, cleaning, sanding or chemical handling operations

CONSTRUCTION:

- Rigid metal base & housing with four rubber feet.
- Brass & galvanized steel plumbing.
- *Quick-connect* Rectus (OBAC) air fittings
(Other fittings avail. upon request).
- Adjustable brass pressure relief valve.
- Pressure gauge 0-15psi
- Fan guard.
- Powder coated gray.

PUMP:

Type: Oil-less, rotary vane, direct driven.
Vaness: Carbon construction (4ea/ replaceable) (3.500" X 1.344" X 0.188")
Inlet Filter: 50 micron felt material
Filter, Inline (Exh): 0.3 Micron HEPA
Pressure, Working: 2-12 psi (15 psi max)
Performance: 0-15 CFM at 60 Hz (adjusted via pressure relief valve)
Airline length: 100 Feet maximum, from pump to respirator. (Sold separately)
Noise level: At Pump: 95 dB
 At 6 feet: 85 dB
 At 10 feet: 78 dB

MOTOR:

Type: 1 ½ HP UL Listed, CSA Certified, TEFC Continuous Duty
Volts: 115V/230 VAC, Single Ø, 60 Hz
Hazardous Location: Class I, Group D & Class II, Group F and G
Current Draw: 16 A @ 115V (8.4 A @ 230V)
RPM: 1725
NEMA Nom eff: 75.0
Cord: 12' 12/3C AWG SJOOW-A 300V Neoprene Medium Duty
Plug: 20A 125V AGP Type, Hazardous location.
Receptacle: Hazardous Location receptacle included.

DIMENSIONS:

Length	Width	Height	Weight
27"	10"	15"	110 Lbs.

SPECIFICATIONS

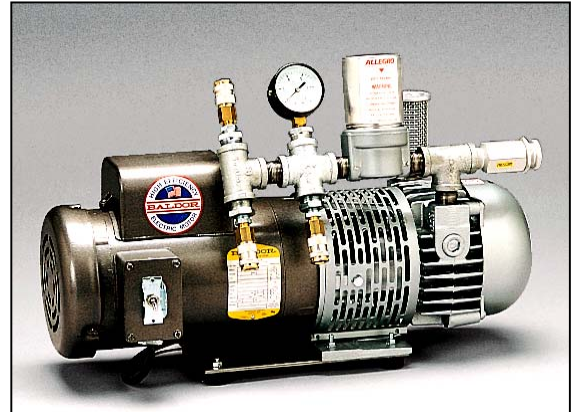
Product Description: **AMBIENT AIR PUMP A-1500 TE**
Part Number: **9832**
Style: **ROTARY VANE**

GENERAL DESCRIPTION:

Portable air source for up to three full or half face respirator users, or two hood users. Solid performance in multi-worker applications, cleaning, sanding or chemical handling operations

CONSTRUCTION:

- Rigid metal base & housing with four rubber feet.
- Brass & galvanized steel plumbing.
- *Quick-connect* Rectus (OBAC) air fittings (Other fittings avail. upon request).
- Adjustable brass pressure relief valve.
- Pressure gauge 0-15psi
- Fan guard.
- Powder coated gray.



PUMP:

Type: Oil-less, rotary vane, direct driven.
Vaness: Carbon construction (4ea/ replaceable) (3.500" X 1.344" X 0.188")
Inlet Filter: 50 micron felt material
Filter, Inline (Exh): 0.3 Micron HEPA
Pressure, Working: 2-12 psi (15 psi max)
Performance: 0-20 CFM (adjusted via pressure relief valve)
Airline length: 100 Feet maximum, from pump to respirator. (sold separately)
Noise level: At Pump: 95 dB
At 6 feet: 85 dB
At 10 feet: 78 dB

MOTOR:

Type: 1 ½ HP UL Listed, CSA Certified, TEFC Continuous Duty
Volts: 115V/230V AC Single Ø, 60 Hz
Current Draw: 16 A @ 115V (8.4 A @ 230V)
RPM: 1725
NEMA Nom eff: 72.0
Cord: 8' 14/3 AWG SJTW-A 300V Neoprene Medium Duty
Switch: Toggle, External ON/OFF
Plug: NEMA L5-15P (L6-20P in 230V Configuration) 3 Prong.

DIMENSIONS:

Length	Width	Height	Weight
23 ½ "	9 ½ "	15 ½ "	110 Lbs.